



THE E2W COMPANY

COMPANY PROFILE

EMPOWERING DIVERSITY, DRIVING INNOVATION

Our mission is to revolutionise industries through a combination of creativity, technology, and inclusivity.



EMAIL

info@e2w.one



TELEPHONE

+1 (719) 301 0359



WEBSITE

www.e2w.one

ABOUT US

Established in 2023 and headquartered in Colorado, USA, with practises based in UK and Pakistan, The E2W Company is a dynamic and forward-thinking LLC that specialises in driving innovation, fostering diversity, and delivering transformative solutions across various industries. With a relentless commitment to excellence and a passion for pushing boundaries, we have quickly emerged as a trusted partner for businesses seeking to navigate the complexities of today's rapidly evolving market landscape.

At The E2W Company, we believe in harnessing the power of innovation to create value, stimulate growth, and drive positive change. With a diverse portfolio of services spanning web and software development, digital marketing and advertising, and architecture and design, we are uniquely positioned to meet the diverse needs of our clients and help them achieve their goals.

Our team of seasoned professionals brings a wealth of experience, expertise, and creativity to every project, ensuring that we deliver solutions that are not only innovative and impactful but also tailored to the unique needs and objectives of each client. By leveraging cutting-edge technologies, industry best practices, and a collaborative approach, we empower businesses to thrive in today's competitive marketplace and seize new opportunities for growth and success.

As a company rooted in integrity, transparency, and client satisfaction, we are committed to building long-lasting relationships based on trust, mutual respect, and shared values. By prioritising the needs of our clients and consistently exceeding their expectations, we have earned a reputation for excellence and become a trusted partner for businesses seeking to achieve their full potential.

With a firm belief in the power of innovation, collaboration, and continuous improvement, The E2W Company is dedicated to driving meaningful change and making a positive impact in the communities we serve. As we continue to grow and evolve, our commitment to excellence, integrity, and client satisfaction remains unwavering, ensuring that we remain at the forefront of innovation and continue to deliver value-driven solutions that drive sustainable growth and success.

EMPOWERING DIVERSITY, DRIVING INNOVATION

EMPOWERING DIVERSITY, DRIVING INNOVATION



THE E2W COMPANY

EMPOWERING DIVERSITY, DRIVING INNOVATION



+1 (719) 301-0359



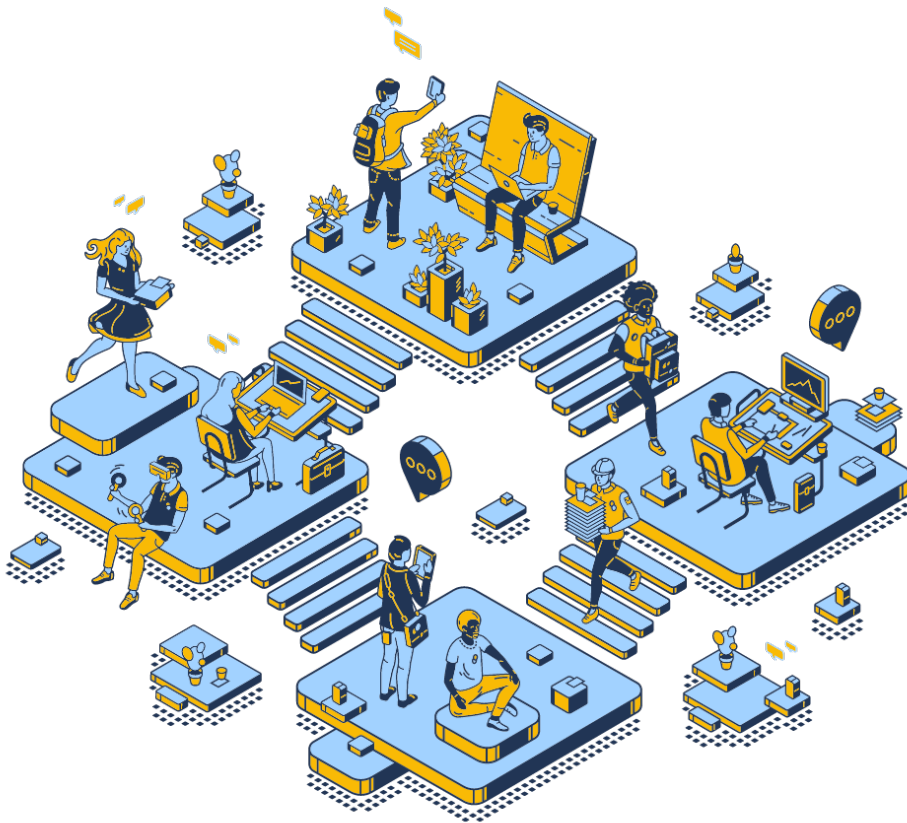
info@e2w.one



www.e2w.one

Overview

The E2W Company is a dynamic and innovative firm based in Colorado, US, specialising in web and software development, digital marketing and advertising, and architecture and design services. Since its inception in 2023, The E2W Company has been dedicated to driving innovation and empowering diversity across various industries. With a focus on delivering high-quality solutions tailored to the unique needs of each client, we have quickly established ourselves as a trusted partner for businesses seeking cutting-edge technology and creative design expertise.



Mission

At The E2W Company, our mission is to revolutionise industries through a combination of creativity, technology, and inclusivity. We are committed to empowering businesses of all sizes to thrive in an ever-evolving digital landscape by providing innovative solutions that drive growth, foster diversity, and make a positive impact on communities worldwide.

We believe that every business has the potential to achieve greatness, and our mission is to help them realise that potential. Whether it's through cutting-edge web and software development, strategic digital marketing and advertising campaigns, or inspired architecture and design services, we are dedicated to delivering solutions that exceed expectations and propel our clients to new heights of success.

We are driven by a passion for innovation and a desire to create meaningful change in the world. By leveraging the latest technologies, embracing diverse perspectives, and maintaining a relentless focus on excellence, we aim to be the catalyst for transformation in every industry we serve.

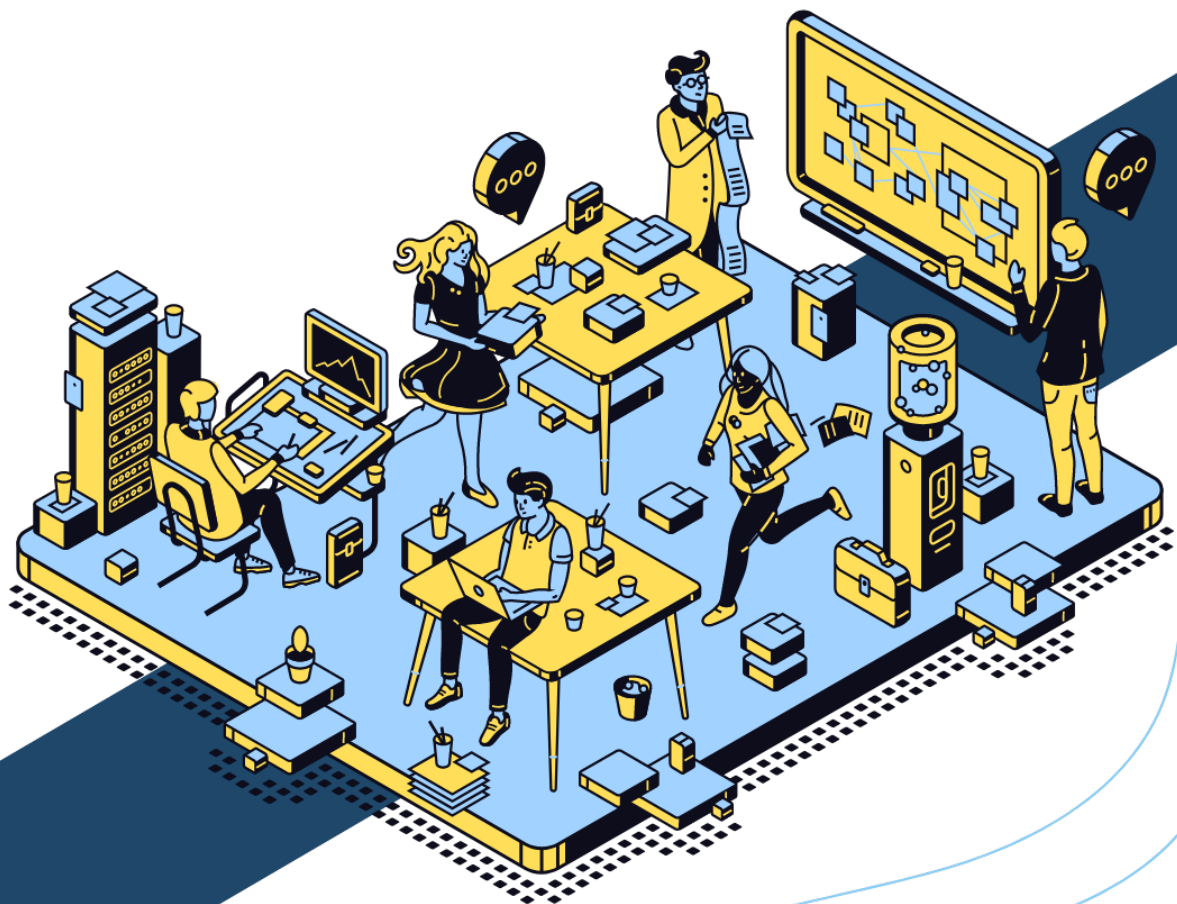
Vision

Our vision at The E2W Company is to be a leading force in shaping the future of technology, design, and marketing, while championing diversity and social responsibility. We aspire to create a world where businesses thrive through collaborative innovation and sustainable practices, and where every individual has the opportunity to reach their full potential.

We envision a future where technology is not just a tool, but a force for positive change, driving economic growth, social progress, and environmental sustainability. By harnessing the power of creativity and technology, we aim to empower businesses to adapt, evolve, and thrive in an increasingly digital world.

Our vision extends beyond business success to encompass a broader commitment to social impact and community engagement. We believe that by supporting diversity, equity, and inclusion, and by giving back to the communities in which we operate, we can create a better, more equitable world for future generations.

Together, with our clients, partners, and employees, we are building a brighter future—one where innovation knows no bounds, diversity is celebrated, and success is measured not only by profits, but by the positive impact we make on the world.



Company Values

01

Innovation

We embrace creativity and push the boundaries of what's possible. We are constantly seeking new ideas, technologies, and approaches to deliver innovative solutions that drive real results for our clients.



02

Excellence

We are committed to excellence in everything we do. We strive for perfection in our work, paying attention to every detail and delivering exceptional quality to our clients.



03

Integrity

We believe in honesty, transparency, and ethical behaviour in all our interactions. We hold ourselves to the highest standards of integrity and always act with integrity, even when no one is watching.



04

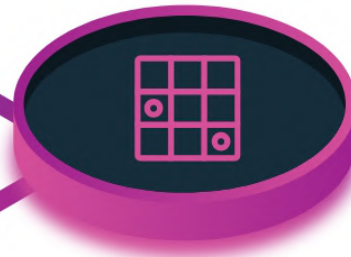
Collaboration

We value teamwork and collaboration, both internally and with our clients and partners. We believe that by working together, we can achieve more and drive greater impact.

05

Diversity and Inclusion

We celebrate diversity and value the unique perspectives and contributions of every individual. We foster an inclusive environment where everyone feels valued.



06

Social Responsibility

We are committed to making a positive impact on society and the environment. We strive to conduct our business in a socially responsible and environmentally sustainable manner.

History and Founding

The E2W Company was founded in 2023 by Shaleem Anjum and Shamain Anjum, two passionate brothers and entrepreneurs with a shared vision to revolutionise industries through innovation and creativity. Drawing on their diverse backgrounds in technology, design, marketing, and business, they set out to create a company that would be at the forefront of digital transformation.

From its humble beginnings as a small startup, The E2W Company has grown rapidly, expanding its portfolio of services and establishing itself as a trusted partner for businesses seeking to thrive in the digital age. Within the past year, we have built a reputation for excellence, delivering cutting-edge solutions that drive growth, empower businesses, and make a positive impact on society.

As we look to the future, we remain committed to our founding principles of innovation, integrity, and social responsibility. We are excited about the journey ahead and the opportunity to continue shaping the future of technology, design, and marketing for years to come.



Location and Legal Structure

The E2W Company is headquartered in the vibrant city of Boulder, Colorado, nestled against the stunning backdrop of the Rocky Mountains. With its thriving tech scene, entrepreneurial spirit, and unparalleled natural beauty, Boulder provides the perfect setting for our innovative and forward-thinking company.

Registered as a Limited Liability Company (LLC) in the state of Colorado, The E2W Company operates within the legal framework established by the state's business laws. This legal structure offers us the flexibility and protection we need to pursue our ambitious goals and navigate the complexities of the modern business landscape.

In addition to our headquarters in Boulder, we also have a strong presence in Islamabad, Pakistan, where we operate remotely to leverage the exceptional talent and expertise available in the region. This global perspective allows us to tap into diverse perspectives, skills, and resources, enabling us to deliver world-class solutions to our clients across the globe.

By combining the best of both worlds – the innovative spirit of Boulder and the global talent pool of Islamabad – The E2W Company is well-positioned to drive innovation, growth, and success for years to come.

OUR SERVICES

At The E2W Company, we pride ourselves on offering a diverse range of high-quality services tailored to meet the unique needs and objectives of our clients. With a strong focus on innovation, creativity, and excellence, we are committed to delivering outstanding results that drive success and growth.



Web and Software Development

Our web and software development services encompass a wide range of solutions tailored to meet the unique needs of our clients. From creating dynamic websites to developing robust software applications, we leverage the latest technologies and best practices to deliver high-quality solutions that drive business growth. Our team of experienced developers works closely with clients to understand their requirements and deliver customised solutions that exceed expectations. Whether you need a simple website or a complex enterprise software solution, we have the expertise and experience to bring your vision to life.

Custom Web Development:

We specialise in developing custom websites tailored to the unique needs and goals of our clients. Our team of experienced developers uses cutting-edge technologies and best practices to create responsive, user-friendly websites that engage visitors and drive conversions.

E-commerce Development:

Our e-commerce development services are designed to help businesses launch and grow their online stores. From building scalable platforms to integrating payment gateways and inventory management systems, we provide end-to-end solutions that empower businesses to sell their products and services online.

Mobile App Development:

We offer mobile app development services for iOS and Android platforms, enabling businesses to reach their customers on the devices they use most. Whether it's a native app, hybrid app, or cross-platform solution, our team has the expertise to bring your app idea to life and deliver a seamless user experience.

Content Management Systems (CMS):

We specialise in developing custom content management systems that empower businesses to manage and update their website content with ease. Whether it's WordPress, Joomla, or Drupal, we provide robust CMS solutions that streamline content management and enhance website functionality.

Software Development:

Our software development services encompass a wide range of solutions, including custom software applications, enterprise software solutions, and SaaS (Software as a Service) platforms. We work closely with clients to understand their business needs and develop tailored software solutions that drive efficiency and productivity.

UI/UX Design:

We believe that user experience is paramount to the success of any digital product. Our UI/UX design services focus on creating intuitive and visually appealing interfaces that delight users and enhance usability. From wire framing and prototyping to user testing and refinement, we ensure that every design decision is driven by user-centric principles.

Website Maintenance and Support:

In addition to development, we provide ongoing website maintenance and support services to ensure that our clients' websites remain secure, up-to-date, and optimised for performance. From security patches and software updates to content updates and bug fixes, our team is committed to keeping our clients' websites running smoothly.

Empowering Innovation, Enabling
Tomorrow: **The E2W Company**
Where Ideas Transform into Reality.

All projects under web and software development are included under the client portfolio.



How we do it?

A Methodology of Excellence

Agile Development
Methodology

Expert Team and
Cutting-Edge Technologies

Quality Assurance **&** Testing

Mission

Empowering Businesses for a Digital
Future

Vision

Transforming Industries Through
Technology

Architecture and Interior Design

Our architecture and interior design services are driven by a passion for creativity and innovation. We specialise in creating captivating spaces that inspire and delight, whether it's residential homes, commercial buildings, or hospitality venues. Our team of talented architects and designers collaborates closely with clients to understand their vision and translate it into stunning designs that reflect their unique style and personality. From concept development to final execution, we ensure that every detail is meticulously crafted to create spaces that are both functional and aesthetically pleasing.



Architectural Design:

Our architectural design services encompass the conceptualisation, planning, and design of buildings and structures. We collaborate closely with clients to understand their vision, requirements, and objectives, and then leverage our expertise to create innovative and functional architectural designs that exceed expectations.

Interior Design:

We offer comprehensive interior design services tailored to the unique needs and preferences of each client. From conceptualisation and space planning to material selection and furnishings, our team of interior designers works collaboratively with clients to transform their spaces into beautiful, functional, and personalised environments.

Space Planning:

Our space planning services focus on optimising the layout and functionality of interior spaces to maximise efficiency and usability. Whether it's a residential, commercial, or hospitality project, we



employ strategic space planning techniques to create layouts that enhance workflow, traffic flow, and overall comfort.

3D Visualisation:

We utilise cutting-edge 3D visualisation technology to bring architectural and interior design concepts to life. Through photorealistic renderings and virtual tours, clients can visualise their projects in detail before construction begins, enabling them to make informed decisions and adjustments as needed.

Furniture and Product Design:

At The E2W Company, we specialise in bespoke furniture and innovative product design, creating custom pieces that blend functionality with aesthetics and cutting-edge products that stand out in the market. Our skilled designers and craftsmen work closely with clients to bring their visions to life, ensuring quality, sustainability, and excellence in every project. Whether it's crafting beautiful furniture or developing groundbreaking products, we are committed to enhancing spaces and user experiences with our unique, tailor-made solutions.

Project Management:

Our project management services ensure seamless execution and coordination of architectural and interior design projects from conception to completion. We oversee every aspect of the

project, including budgeting, scheduling, procurement, and contractor coordination, to ensure that projects are delivered on time, within budget, and to the highest standards of quality.

Consultation and Advisory Services:

In addition to design and project management, we offer consultation and advisory services to clients seeking expert guidance on architectural and interior design matters. Whether it's reviewing existing plans, providing design recommendations, or offering expert advice on industry trends and best practices, our team is dedicated to providing valuable insights and solutions to our clients.

Projects Designed and Delivered

12

Clients

07

Corporate

03

Landscape

28

Projects

08

Residential

10

Commercial

Transforming Spaces. Elevating Lives.

Through Architecture and Interior Design



<https://www.instagram.com/spacesbysignature/>



<https://www.pinterest.com/spacesbysignature/>



<https://www.facebook.com/spacesbysignature>



<https://www.linkedin.com/company/spacesbysignature/>



Digital Marketing and Advertising

In today's competitive marketplace, effective digital marketing and advertising are essential for business success. Our digital marketing services are designed to help our clients enhance their online presence, reach their target audience, and drive meaningful results. From developing comprehensive digital marketing strategies to implementing targeted advertising campaigns, we offer a full suite of services to meet our clients' needs. Our team of digital marketing experts stays up-to-date with the latest trends and technologies to ensure that our clients stay ahead of the curve and achieve their marketing goals.



Digital Marketing Strategy:

We work closely with clients to develop comprehensive digital marketing strategies tailored to their unique goals and objectives. Our team conducts in-depth market research, competitor analysis, and audience segmentation to identify opportunities and develop targeted strategies that maximise ROI and drive business growth.

Search Engine Optimisation (SEO):

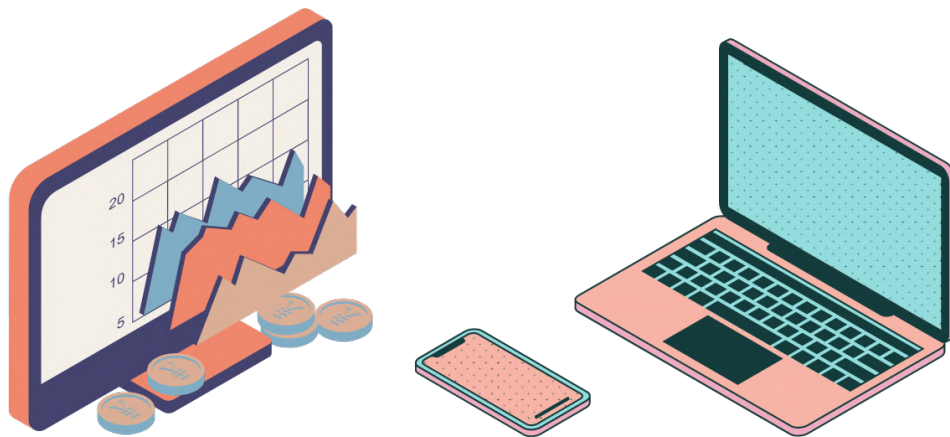
Our SEO services focus on improving organic search visibility and driving targeted traffic to clients' websites. We utilise a combination of on-page optimisation, content marketing, link building, and technical SEO tactics to improve search engine rankings and increase online visibility.

Pay-Per-Click (PPC) Advertising:

We specialise in creating and managing highly effective PPC advertising campaigns across platforms such as Google Ads, Facebook Ads, and LinkedIn Ads. Our PPC experts leverage advanced targeting options, ad copy optimisation, and bidding strategies to drive qualified leads and maximise ad spend efficiency.

Social Media Marketing (SMM):

Our SMM services encompass the creation, management, and optimisation of social media campaigns across platforms such as Facebook, Instagram, Twitter, and LinkedIn. We develop engaging content, run targeted ad campaigns, and monitor performance metrics to increase brand awareness, engagement, and conversions.



Content Marketing:

We offer comprehensive content marketing services aimed at creating valuable, relevant, and engaging content that resonates with target audiences. From blog posts and articles to videos and infographics, our content marketing experts develop compelling content strategies that drive traffic, generate leads, and build brand authority.

Email Marketing:

Our email marketing services focus on creating personalised and highly engaging email campaigns that nurture leads, drive conversions, and foster customer loyalty. We utilise segmentation, automation, A/B testing, and analytics to optimise email campaigns for maximum effectiveness and ROI.

Digital Advertising Design:

We provide creative design services for digital advertising campaigns, including banner ads, social media graphics, and display ads. Our team of designers creates visually appealing and on-brand assets that capture audience attention and drive clicks and conversions.

Analytics and Reporting:

We offer comprehensive analytics and reporting services to track the performance of digital marketing campaigns and provide actionable insights for optimisation. Our team monitors key metrics, analyses campaign data, and prepares detailed reports to measure ROI and inform future strategies.

Designed and Delivered Projects

At The E2W Company, we take pride in our diverse portfolio, showcasing our expertise and innovation across various industries. Our portfolio features a wide range of projects and case studies, highlighting our commitment to excellence and client satisfaction and clients from various domains utilising our end-to-end services from architecture design, web/software development and, digital marketing and advertising.

Our Clients



DERMAZUR





SJ MARKETING AGENCY



From web and software development to architecture and interior design, and digital marketing and advertising, our client list reflects the depth and breadth of our capabilities. Each project is carefully curated to demonstrate our creativity, technical proficiency, and dedication to delivering exceptional results.

Whether it's developing cutting-edge websites and applications, designing stunning architectural spaces, or executing strategic marketing campaigns, our portfolio demonstrates our ability to meet and exceed client expectations. We believe in showcasing real-world examples of our work to inspire confidence and trust in our capabilities.

Explore our portfolio to see how we've helped businesses like yours achieve their goals and unlock their full potential. With The E2W Company, you can expect nothing less than excellence in every project we undertake.



<https://www.e2w.one>



<https://www.instagram.com/e2wcompany/>



<https://www.facebook.com/e2wcompany>



<https://www.linkedin.com/company/the-e2w-company>

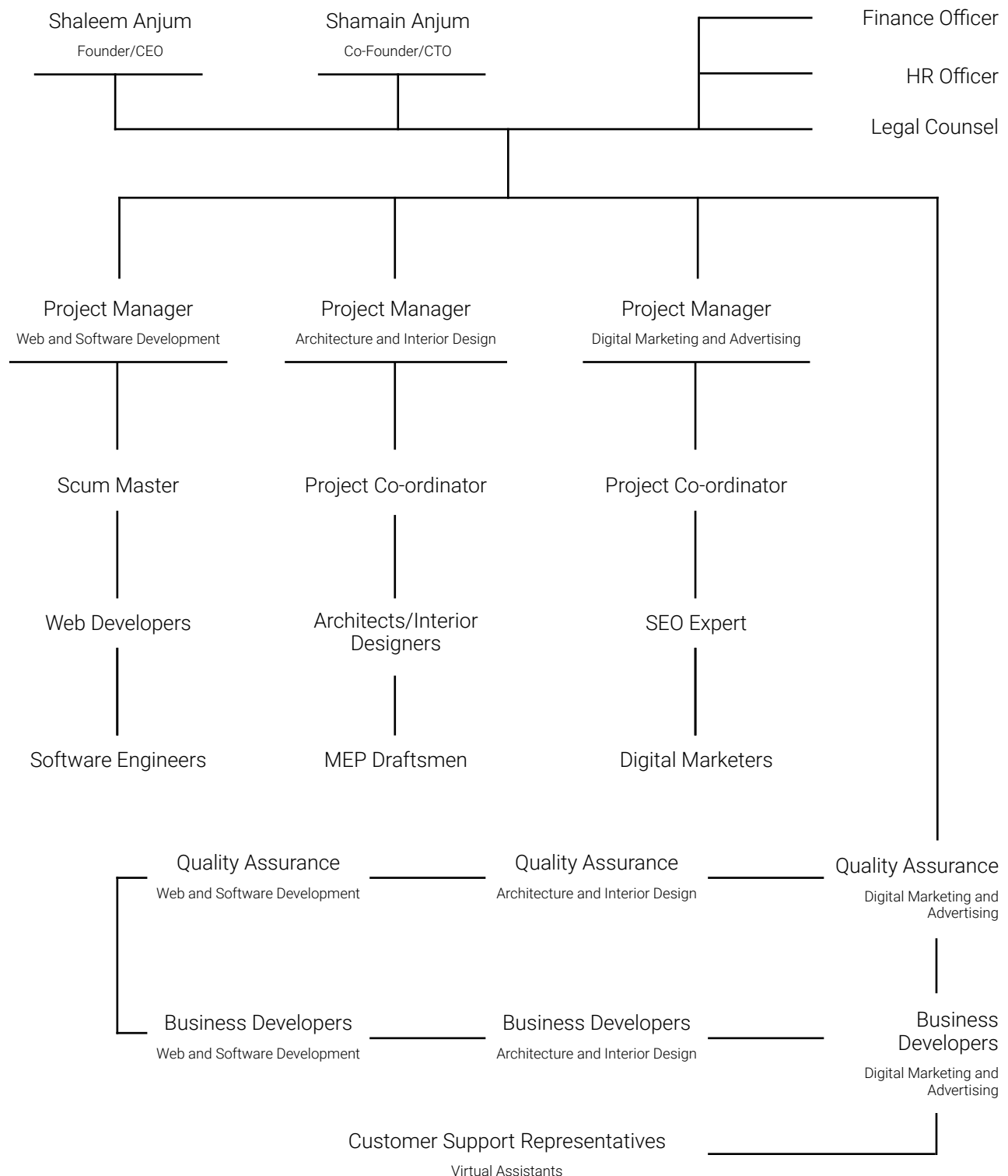
Our Approach

Our approach is rooted in a commitment to excellence, innovation, and client-centricity. We believe in leveraging cutting-edge technologies, strategic methodologies, and collaborative partnerships to deliver exceptional results that drive business growth and success. Here's an overview of our approach:

1	Client-Centric Focus: We prioritise understanding our clients' unique needs, objectives, and challenges to tailor solutions that deliver maximum value.	Strategic Planning and Execution: Our seasoned professionals excel in strategic planning, conducting thorough research, analysis, and planning to drive tangible results aligned with our clients' objectives.	2
3	Innovation and Creativity: Embracing creativity and the latest technologies, we develop innovative solutions that set our clients apart from the competition, driving continuous growth and success.	Collaborative Partnerships: By working closely with clients as strategic partners, we foster open communication, mutual trust, and shared goals to deliver impactful solutions for long-term success.	4
5	Agile and Adaptive Approach: Adopting an agile project management approach, we respond quickly to changes, adapt to new requirements, and deliver results with speed and efficiency.	Data-Driven Decision Making: Leveraging advanced analytics and performance tracking tools, we gather actionable insights to optimise strategies for continuous improvement and success.	6
7	Continuous Learning and Improvement: Committed to ongoing learning, skill development, and staying abreast of industry trends, we ensure our team delivers best-in-class solutions.	Measurable Results and ROI: Our success is measured by the success of our clients, delivering measurable results, transparent reporting, and continuous refinement for maximum impact and value.	8

Our Team

At The E2W Company, our team is our greatest asset. Comprising talented professionals from diverse backgrounds and expertise, we bring together a wealth of knowledge, experience, and passion to every project we undertake. Our team members are dedicated, creative, and driven by a shared commitment to excellence. From web developers and software engineers to architects and digital marketers, each member of our team plays a vital role in delivering innovative solutions that exceed our clients' expectations. Together, we collaborate, innovate, and inspire, ensuring that we consistently deliver outstanding results and drive success for our clients.



Our Achievements

Throughout our journey, The E2W Company has achieved significant milestones and successes that reflect our commitment to excellence and innovation. From successfully delivering complex web development projects to designing award-winning architectural masterpieces, our achievements underscore our dedication to pushing the boundaries of what's possible and delivering exceptional results. We take pride in our track record of success and are grateful for the recognition and accolades we've received along the way. As we continue to grow and evolve, we remain committed to building on our past achievements and striving for even greater success in the future.

In Architecture and Design

12	Clients	07	Corporate	03	Landscape
28	Projects	08	Residential	10	Commercial

In Software Development and Web Development

25	Clients	21	Web Development	02	CRM Development
32	Projects	04	Software Development	05	UI/UX Design

In Digital Marketing and Advertising

3	Clients	21	SEO	02	Email Marketing
5	Projects	04	Social Media Marketing	05	Content Design

Our digital marketing and advertising has produced positive results for our clients providing an average 107% growth within the first month and also contributed to a larger client database, growing lead generation by 87% and data and analytic based decision making for their organisations which has ultimately led to their positive growth.

Our Impact

At The E2W Company, our impact extends beyond the projects we deliver. We are deeply committed to making a positive difference in the communities we serve and the world at large. Through our innovative solutions, sustainable practices, and social responsibility initiatives, we aim to create lasting impact and drive positive change. Whether it's supporting local communities, promoting environmental sustainability, or empowering underrepresented groups, we are dedicated to leveraging our resources, expertise, and influence to make a meaningful difference. By aligning our business goals with our values and purpose, we strive to leave a legacy of impact that extends far beyond the bottom line. Together, we can create a brighter, more sustainable future for generations to come.

Community engagement is a core aspect of The E2W Company's ethos and values. We recognise the importance of being actively involved in the communities where we live and work, and we are committed to making a positive impact through meaningful engagement and collaboration.

One of the key ways we engage with the community is through our outreach programs and initiatives. Whether it's partnering with local schools to provide educational opportunities for students, volunteering at community events and fundraisers, or supporting local charities and nonprofits, we are dedicated to giving back and making a difference. By actively participating in community activities and events, we strengthen our connections, build relationships, and foster a sense of belonging and unity.

In addition to our direct involvement in community events, we also prioritise community input and feedback in our decision-making processes. We believe that engaging with community members and stakeholders is essential for understanding their needs, preferences, and concerns. By soliciting feedback, listening to community members, and incorporating their input into our projects and initiatives, we ensure that our work is relevant, responsive, and beneficial to the communities we serve.

Furthermore, we are committed to supporting diversity, equity, and inclusion in all aspects of our community engagement efforts. We strive to create inclusive spaces where everyone feels welcome, valued, and respected. Whether it's promoting diversity in our hiring practices, supporting minority-owned businesses, or advocating for social justice issues, we are dedicated to championing diversity and creating opportunities for all.

Overall, community engagement is an integral part of our commitment to corporate social responsibility and sustainability. By actively engaging with and supporting our communities, we not only strengthen our relationships and enhance our reputation but also contribute to the well-being and prosperity of society as a whole. At The E2W Company, we are proud to be active and engaged members of our communities, and we look forward to continuing our efforts to make a positive difference in the world.



THE E2W COMPANY

LET'S WORK TOGETHER!



+1 (719) 301 0359

(+92) 347 6133664



(+92) 347 6133664



info@e2w.one



www.e2w.one



1942 Broadway Street, STE 314C
Boulder, CO 80302
United States

Islamabad, Pakistan

EMPOWERING DIVERSITY, DRIVING INNOVATION



+1 (719) 301-0359



info@e2w.one



www.e2w.one



THE E2W COMPANY

LET'S WORK TOGETHER!



+1 (719) 301 0359
(+92) 347 6133664



(+92) 347 6133664



info@e2w.one



www.e2w.one



1942 Broadway Street, STE 314C
Boulder, CO 80302
United States

Islamabad, Pakistan